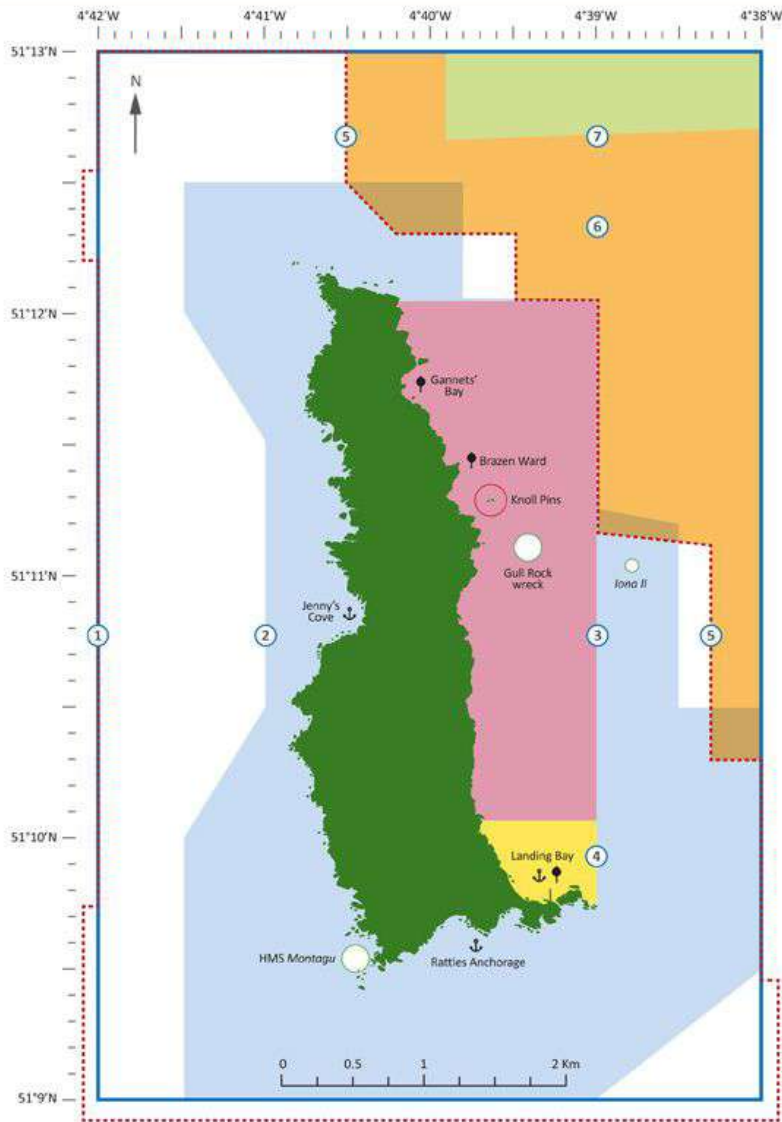


# Lundy Marine Protected Area Zoning Scheme

The Lundy Marine Protected Area (MPA) was established as a Marine Nature Reserve in 1986 to protect the remarkable diversity of marine habitats and wildlife which are present around the island. The MPA is currently used by a variety of people undertaking various diverse activities. This Zoning Scheme has been developed to enable everyone to enjoy the MPA whilst also protecting this special place.



The Lundy Marine Protected Area encompasses several separate designations, each of which is associated with different specific protections. Originally established as a Marine Nature Reserve in 1986 (under the Wildlife and Countryside Act 1981), the exact same MNR area became a Marine Conservation Zone in 2010 (under the Marine and Coastal Access Act 2009). In 2003, the No Take Zone was established under a Devon Sea Fisheries Committee (now the Devon and Severn Inshore Fisheries and Conservation Authority) byelaw. In 2005, the Marine Nature Reserve became a Special Area of Conservation under the European Habitats Directive (1992); and, in 2016, the whole MPA was included within the much larger Bristol Channel Approaches SAC - specifically designed to protect the harbour porpoise *Phocoena phocoena*. The foreshore around the island (to low water mark) is included with a Site of Special Scientific Interest designation (which includes much of the island) made in 1976.

Within the MPA, special protection is given to the following habitats: intertidal and subtidal reefs; shallow sediment seabeds; and submerged or partially submerged sea caves. The following species are also afforded special protection: short-beaked common dolphin *Delphinus delphis*; bottlenose dolphin *Tursiops truncatus*; Risso's dolphin *Grampus griseus*; harbour porpoise *Phocoena phocoena*; minke whale *Balaenoptera acutorostrata*; long-finned pilot whale *Globicephala melas*; grey seal *Halichoerus grypus*; basking shark *Cetorhinus maximus*; pink sea fan *Eunicella verrucosa*; and spiny lobster *Palinurus elephas*.

Spearfishing is prohibited by byelaw throughout the SAC and MCZ.

This Zoning Scheme is accompanied by a Code of Conduct, much of which is underpinned by law, to which all users of the MPA should adhere.

- <sup>1</sup> Features and species protected within the SAC and the MCZ are described above.
- <sup>2</sup> The No Netting Area is designated under D&SIFCA Netting Permit Byelaw (Annex 4).
- <sup>3</sup> The No Take Zone was established to protect sensitive and slow-growing reef communities and to enhance our understanding of the effects of these zones and their role in wildlife management. All extractive activities are prohibited from within the No Take Zone (unless under the auspices of a scientific licence).
- <sup>4</sup> This area, centred on the Landing Bay, is recognised as being an area where swimming, snorkelling and other water sports are likely to be taking place. Boat traffic should be aware.
- <sup>5</sup> Area closed to demersal mobile gear (dredges and trawls) designated under D&SIFCA Mobile Fishing Permit Byelaw (Annex 1).
- <sup>6</sup> Area open to demersal trawls only designated under D&SIFCA Mobile Fishing Permit Byelaw (Annex 1a).
- <sup>7</sup> Area open to demersal mobile gear (dredges and trawls) designated under D&SIFCA Mobile Fishing Permit Byelaw (Annex 1b).
- <sup>8</sup> A No Anchoring/No Shot Lines Zone extends for 100m around the Knoll Pins in order to protect the delicate marine life associated with these rock pinnacles.
- <sup>9</sup> Lundy has three heritage wrecks. The *Iona II* and the Gull Rock wreck site were designated as Protected Wrecks in 1989. *HMS Montagu* was designated a Scheduled Monument in 2019. A licence is required to dive on a Protected Wreck, but not on a Scheduled Monument.

